



**REGIONAL SPECIALISED METEOROLOGICAL CENTRE-TROPICAL CYCLONES, NEW DELHI
TROPICAL WEATHER OUTLOOK**

DEMS-RSMC TROPICAL CYCLONES NEW DELHI DATED 10.05.2021

TROPICAL WEATHER OUTLOOK FOR NORTH INDIAN OCEAN (THE BAY OF BENGAL AND ARABIAN SEA) VALID FOR NEXT 120 HOURS ISSUED AT 0600 UTC OF 10.05.2021 BASED ON 0300 UTC OF 10.05.2021.

BAY OF BENGAL:

SCATTERED LOW AND MEDIUM CLOUDS WITH EMBEDDED MODERATE TO INTENSE CONVECTION LAY OVER SOUTHWEST BAY OF BENGAL OFF SRILANKA COAST, ALSO OVER SOUTHEAST BAY OF BENGAL & NORTH BAY OF BENGAL

PROBABILITY OF CYCLOGENESIS(FORMATION OF DEPRESSION) DURING NEXT 120 HRS:

| 24 HOURS | 24-48 HOURS | 48-72 HOURS | 72-96 HOURS | 96-120 HOURS |
|----------|-------------|-------------|-------------|--------------|
| NIL | NIL | NIL | NIL | NIL |

ARABIAN SEA:

BROKEN LOW AND MEDIUM CLOUDS WITH EMBEDDED INTENSE TO VERY INTENSE CONVECTION LAY OVER SOUTHWEST ARABIAN SEA ADJOINING INDIAN OCEAN BETWEEN LATITUDE 8.0°N TO 2.0°S LONGITUDE 50.0°E TO 70.0°E. SCATTERED LOW AND MEDIUM CLOUDS WITH EMBEDDED MODERATE TO INTENSE CONVECTION LAY OVER REST OF SOUTH ARABIAN SEA & MALDIEVES.

A CYCLONIC CIRCULATION EXTENDING UPTO 3.1 KM A.S.L. LIES OVER THE EQUATORIAL INDIAN OCEAN AND ADJOINING CENTRAL PARTS OF THE SOUTH ARABIAN SEA. IT IS LIKELY TO SHIFT EASTWARDS GRADUALLY AND UNDER ITS INFLUENCE A LOW PRESSURE AREA IS LIKELY TO FORM OVER SOUTHEAST ARABIAN SEA AND ADJOINING EQUATORIAL INDIAN OCEAN AROUND 14TH MAY. IT IS LIKELY TO BECOME MORE MARKED OVER THE SOUTHEAST ARABIAN SEA DURING THE SUBSEQUENT 48 HOURS.

PROBABILITY OF CYCLOGENESIS(FORMATION OF DEPRESSION) DURING NEXT 120 HRS :

| 24 HOURS | 24-48 HOURS | 48-72 HOURS | 72-96 HOURS | 96-120 HOURS |
|----------|-------------|-------------|-------------|--------------|
| NIL | NIL | NIL | NIL | LOW |

REMARKS:

THE MADDEN JULIAN INDEX (MJO) CURRENTLY LIES IN PHASE 4 WITH AMPLITUDE CLOSE TO ONE. IT IS LIKELY TO CONTINUE IN THE SAME PHASE FOR THE NEXT 4-5 DAYS WITH GRADUAL REDUCTION IN AMPLITUDE. THE PHASE OF MJO IS CONDUCIVE FOR ENHANCED CONVECTION OVER THE ARABIAN SEA & BAY OF BENGAL DURING THE FORECAST PERIOD. THE AREA OF CONVECTION DEVELOPED OVER SOUTHWEST ARBIAN SEA & ADJOINING

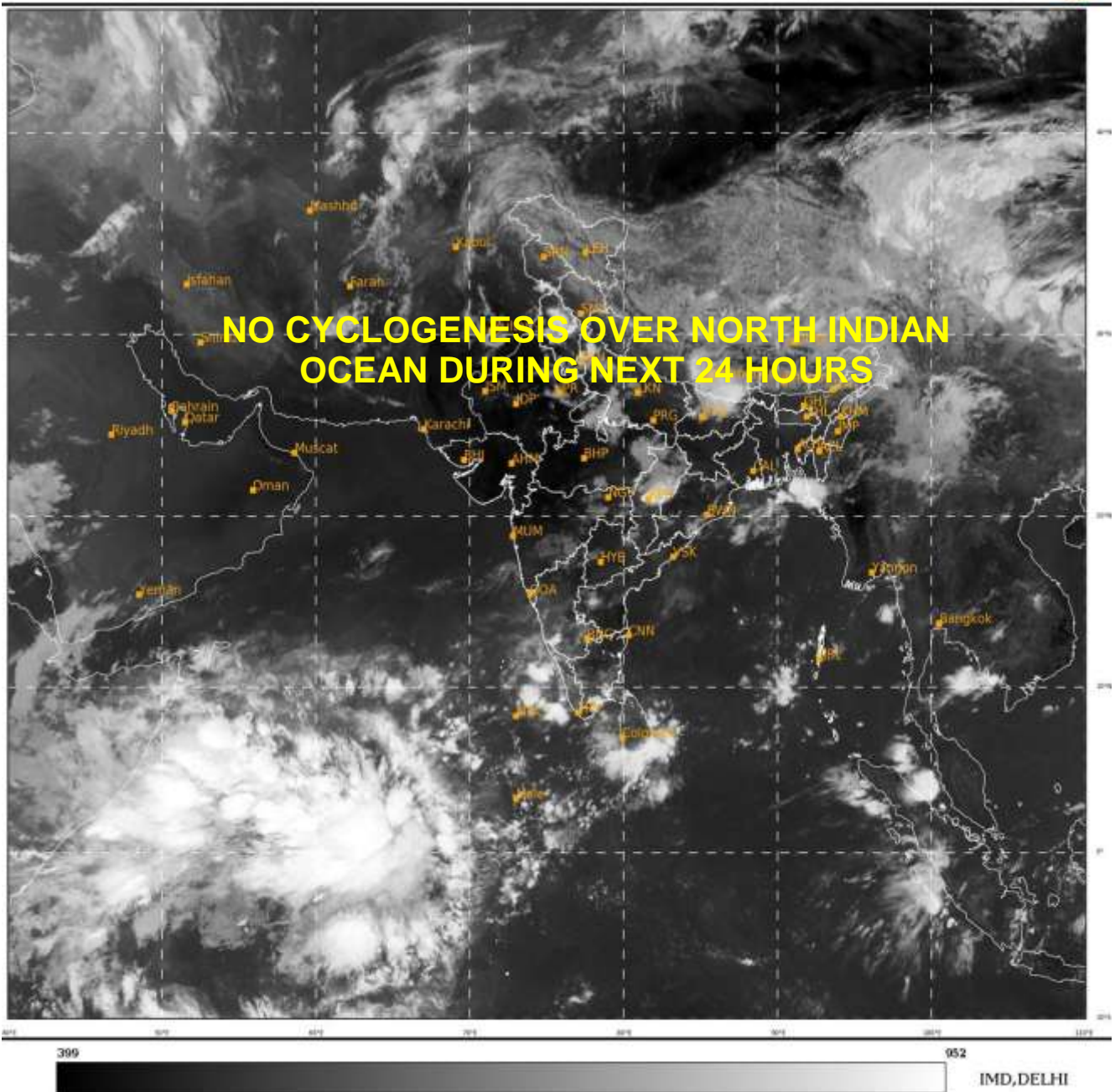
PROBABILITY OF CYCLOGENESIS (FORMATION OF DEPRESSION):NIL: 0%, LOW: 1-25%, FAIR: 26-50%, MODERATE: 51-75% AND HIGH: 76-100%

This is a guidance Bulletin for the WMO/ESCAP Panel Member countries,. Please visit respective National websites for Country specific Bulletins

EQUATORIAL INDIAN OCEAN AND ALONG & OFF SOMALIA COAST AROUND 8TH MAY IS PERSISTING CURRENTLY OVER SOUTHWEST & ADJOINING SOUTHEAST ARABIAN SEA AND EQUATORIAL INDIAN OCEAN. THE CROSS EQUATORIAL FLOW IN THE NEAR EQUATORIAL BELT IS LIKELY TO GET ENHANCED DURING THE NEXT 5 DAYS. LOW LEVEL CONVERGENCE OF $20-30 \times 10^{-5} / S$ AND AN UPPER LEVEL DIVERGENCE OF THE ORDER OF $30 \times 10^{-5} / S$ IS PREVAILING CURRENTLY OVER THE REGION OF CONVECTION. WIND SHEAR IS FAVOURING CONVECTION TO PERSIST AND IT IS LIKELY TO CONTINUE SO OVER THE REGION. NUMERICAL MODELS ARE INDICATING PROBABLE CYCLOGENESIS OVER BOTH HEMISPHERES IN THE EQUATORIAL BELT TOWARDS THE END OF THE FORECAST PERIOD. HENCE WE ARE ASSIGNING A 'LOW' PROBABILITY FOR CYCLOGENESIS OVER SOUTHEAST ARABIAN SEA AND ADJOINING EQUATORIAL INDIAN OCEAN TOWARDS THE END OF THE FORECAST PERIOD.

SAT : INSAT-3D IMG
IMG_TIR1 10.8 um
LIC Mercator

10-05-2021/(0300 to 0326) GMT
10-05-2021/(0830 to 0856) IST



PROBABILITY OF CYCLOGENESIS (FORMATION OF DEPRESSION):NIL: 0%, LOW: 1-25%, FAIR: 26-50%, MODERATE: 51-75% AND HIGH: 76-100%

This is a guidance Bulletin for the WMO/ESCAP Panel Member countries,. Please visit respective National websites for Country specific Bulletins